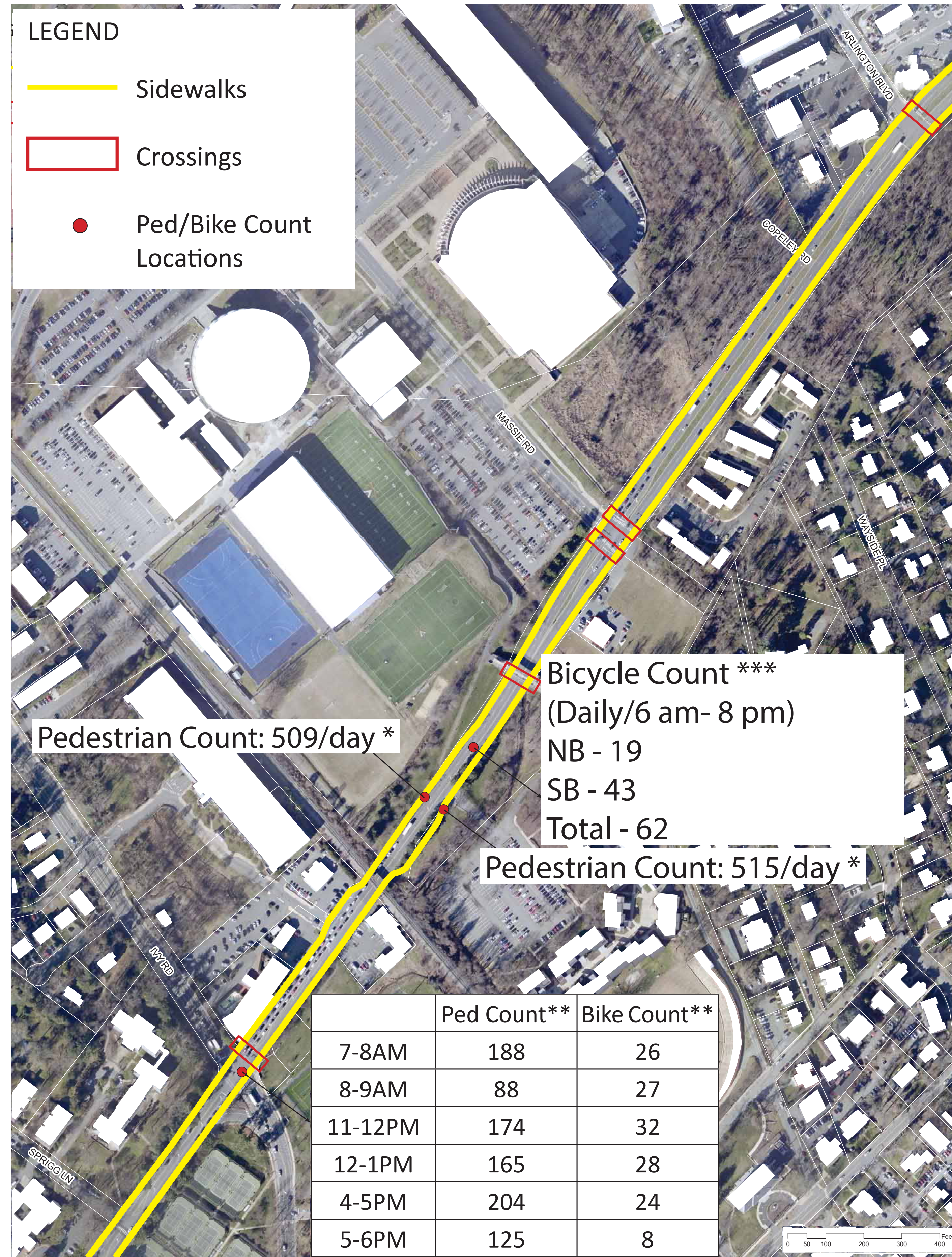


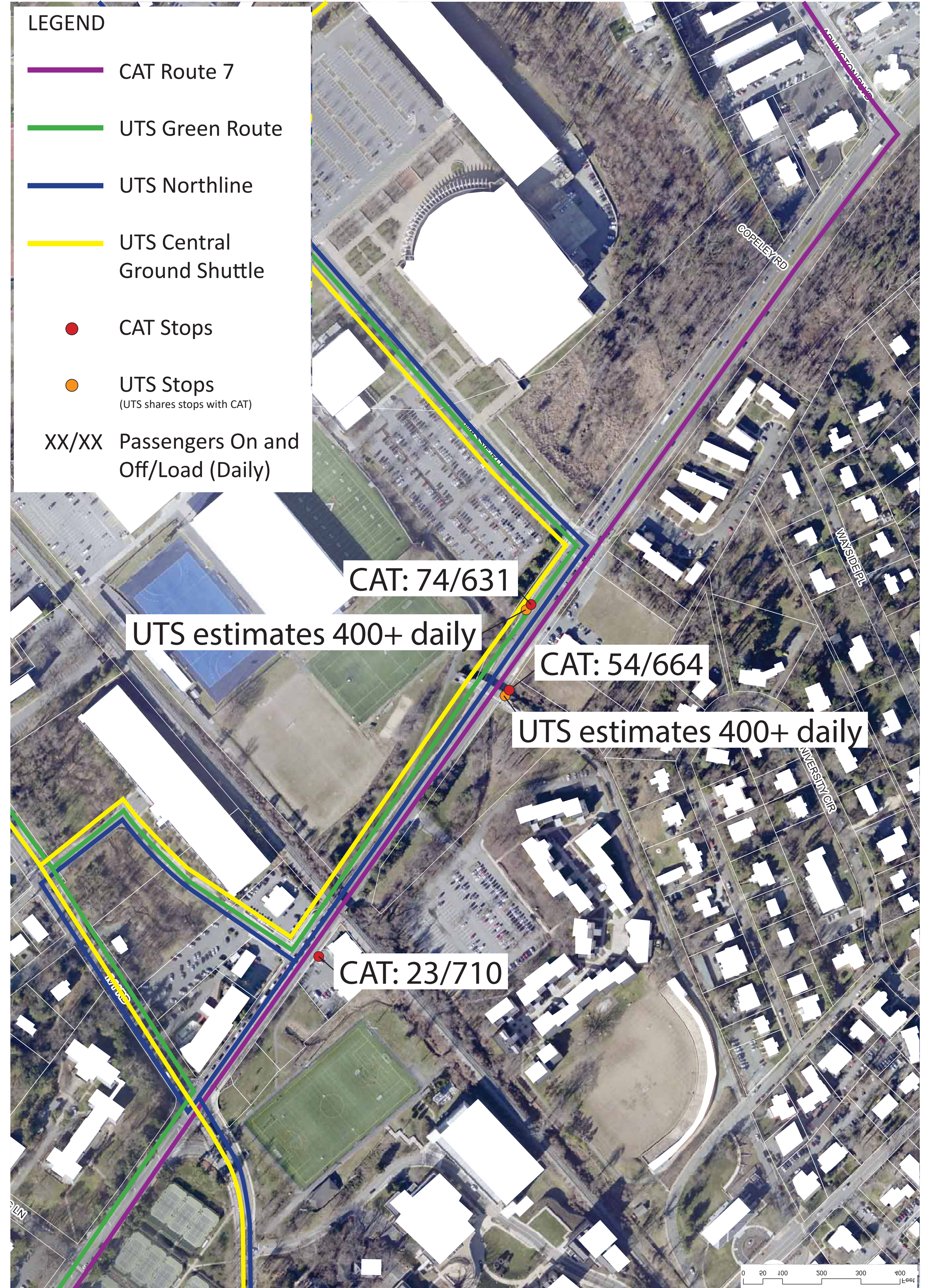
Emmet Streetscape Project | MULTIMODAL EXISTING CONDITIONS

Pedestrian and Bicycle Counts



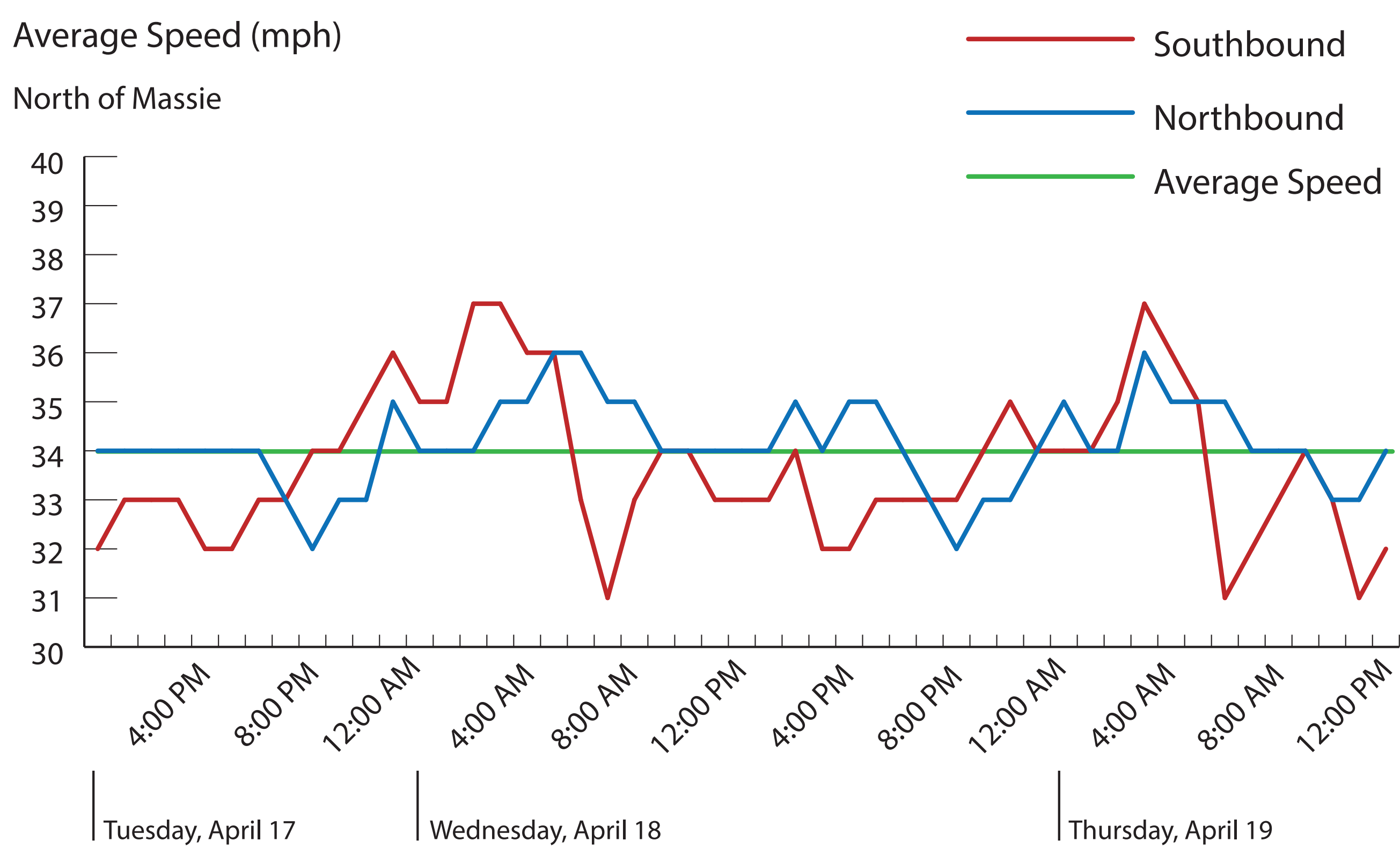
* The pedestrian counts are for typical days between September 2016 and January 2017 when schools were in session and no special events occurred.
 ** The pedestrian and bicycle counts are for typical days in October 2015 when schools were in session and no special events occurred.
 *** The bicycle counts are for April 17th, 2018, a typical day when schools were in session and no special events occurred.

Bus Routes and Ridership

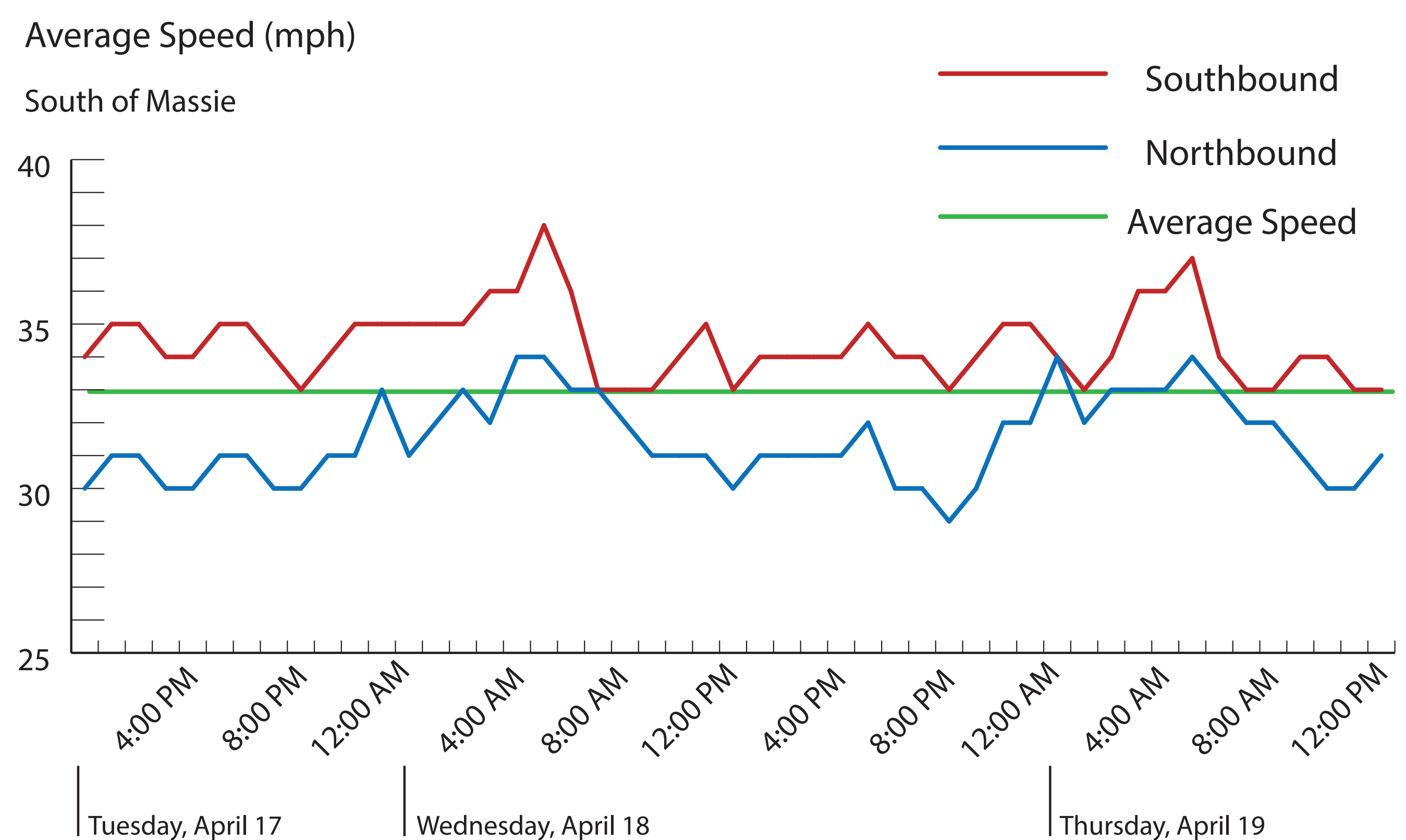


CAT Route #7 uses Emmet. Left number means passengers on and off, right number is total riders (load) on that point of the route per day.
 UVA transit routes (Green, Northline, and Central Grounds shuttle) UTS numbers are for total passengers getting on and off.

Existing Vehicle Speed (Actual)



Key Observations: Average speed for this segment is roughly 34 mph for north of Massie. Higher traffic speeds impact the level of comfort for cyclists and pedestrians in the absence of buffering or protection.



Key Observation: Average speed for this segment is roughly 33 mph for south of Massie.



CLARK NEXSEN



EPRPC

