

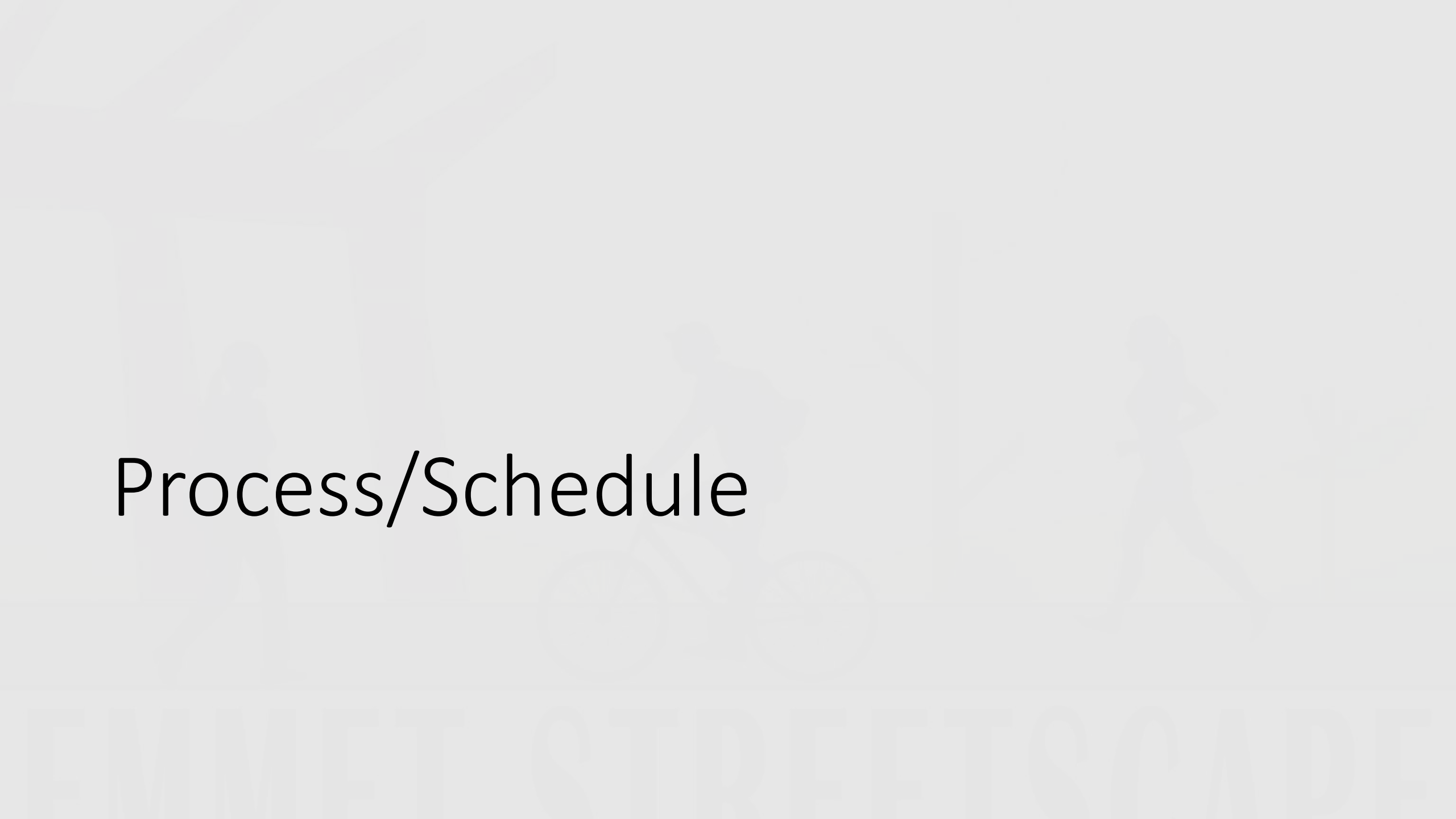


City of Charlottesville
City Council
February 4, 2019

Tonight's Agenda



- **Process/Schedule**
- **Public Engagement Overview**
- **Conceptual Design Review**
- **Review for Comprehensive Plan Consistency**
- **Next Steps**



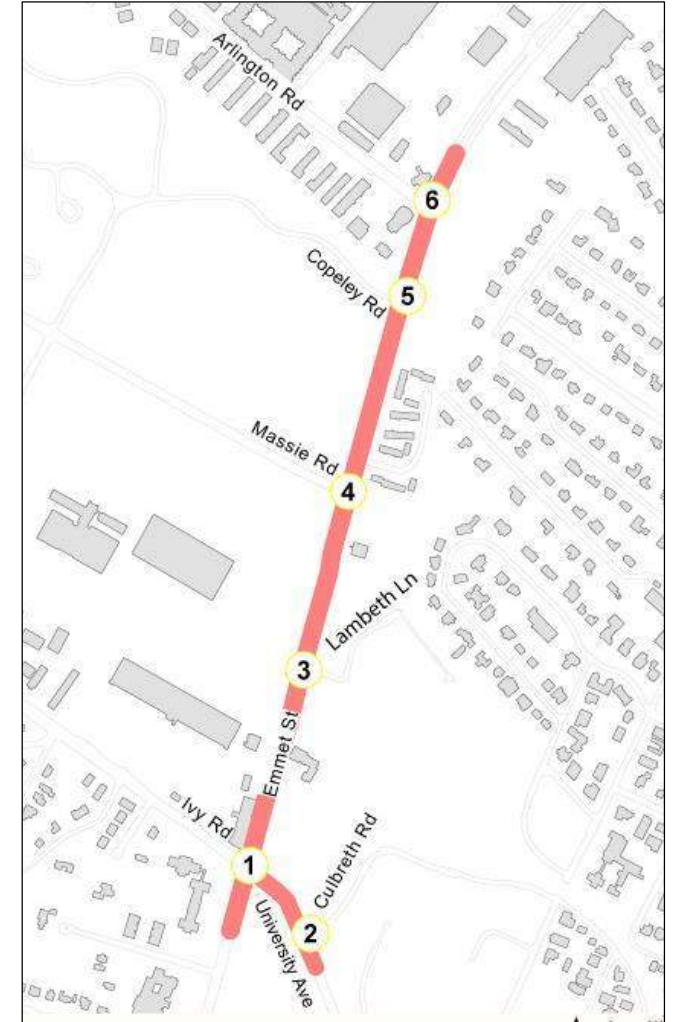
Process/Schedule

Smart Scale Project Description

Objective: A complete street that works for all users

Features:

- Bike lanes on both sides
- 10-ft asphalt multi-use path
- Audible pedestrian signals & ADA standard curb ramps
- 5-ft grassy buffer planted with street trees between the multi-use path and Emmet
- Landscaped center median extended to the ped. bridge
- Bus shelters and optimize/consolidate bus stops
- Traffic signal coordination



Emmet Street Corridor



Process/Schedule



We are here!



- Includes:
- Stakeholder Coord.
 - Community Engagement
 - Streetscape Concepts
 - Citizen Information Mtgs.
 - City Council Briefing
 - Citizen Streetscape Workshop

- Includes:
- Stakeholder Coord. (on-going)
 - Community Engagement (on-going)
 - Citizen Informations Meetings
 - City Council Briefing
 - Final Design and R/W acquisition

- Includes:
- Right-of-Way Acquisition
 - Utility Relocation
 - Construction Advertisement
 - **Construction Begins May, 2021**

Public Engagement Overview

Steering Committee

- Gregg Bleam, Lewis Mountain Neighborhood Assoc.
- Thomas Funari, Federal Realty, Barracks Road Shopping Center
- Lisa Green, Planning Commission
- Alex Ikefuna, Neighborhood Development Services
- Laura Knott, Tree Commission
- Hamilton Lombard, Venable Neighborhood Assoc.
- Mary Hughes, University of Virginia
- Beth Meyer, Lewis Mountain Neighborhood Assoc.
- Claude Morris, Buckingham Branch Railroad Company
- Peter Ohlms, Bike & Pedestrian Advisory Committee
- Abigail Palko, The Meadows Neighborhood Assoc.
- Vipul Patel, Gallery Court Hotel
- Nat Perkins, P.E., UVA Foundation
- Rebecca White, University of Virginia
- Peter Russell, Tree Commission
- Jess Wenger, Fry's Spring Neighborhood Assoc.
- Bobbie Williams, Jefferson Park Ave Neighborhood Assoc.

Website - <http://www.emmetstreetscape.com/>



Public Outreach & Engagement

- 4/18/18: Steering Committee Meeting
- 5/12/18: Community Info. Mtg. 1
- 8/9/18: Steering Committee Meeting
- 9/13/18: CAT/UTS Meeting
- 9/17/18: UVA Student Info. Meeting



Public Outreach & Engagement

Key Feedback: **Community Info. Meeting 1**

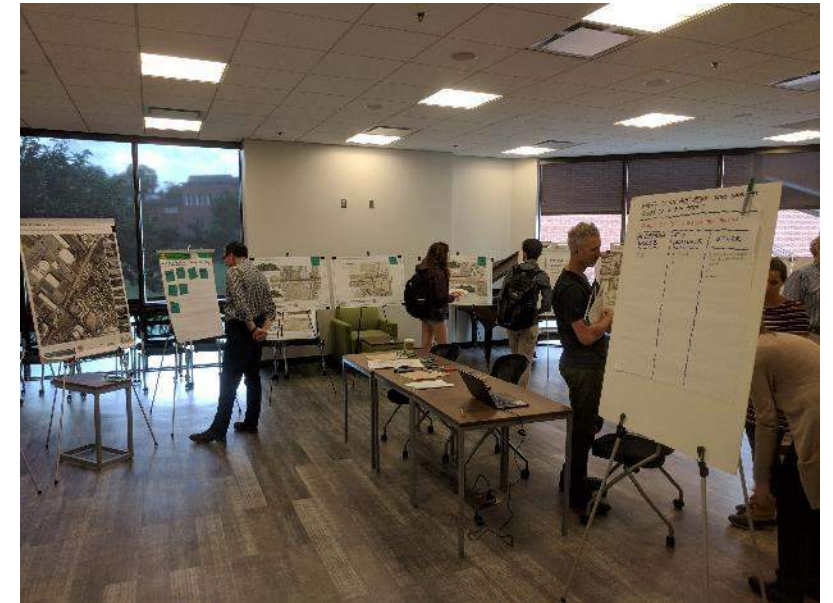
- Understanding use and perceptions
 - ***Autocentric, congested, unsafe....***
- Understanding vision for future use
 - ***Safe, walkable, bike and pedestrian friendly***
- East or West Tunnel location
 - ***11 of 14 prefer West***
- Walking Tour (Valuable Feedback!)
 - ***Not accommodating for pedestrians or bikes.***



Public Outreach & Engagement

Key Feedback: [UVA Student Info. Mtg.](#)

- Understanding student use
 - **Improve bike/ped facilities, safety at Emmet/Ivy/University is important, Central & North Grounds, Barracks Road Shopping Center are major destinations**
- Vision for future use
 - **Protected and raised bicycle lanes, better bike and pedestrian accommodations at Emmet/Ivy/University**
- East or West Tunnel location
 - **East side preferred by some because it's convenient for Lambeth residents, west side preferred by some because of major destinations, east side deviation from the street would be a safety concern**



Provide your
input on the
Emmet
Streetscape
Project!



We value your input for how to best incorporate new dedicated bike lanes, shared-use path and bus stop accommodations on the Emmet Street corridor.

Help us in developing the overall function of the corridor.

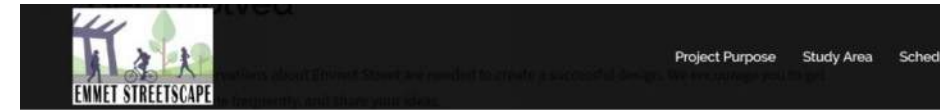
www.emmetstreetscape.org



Public Outreach & Engagement

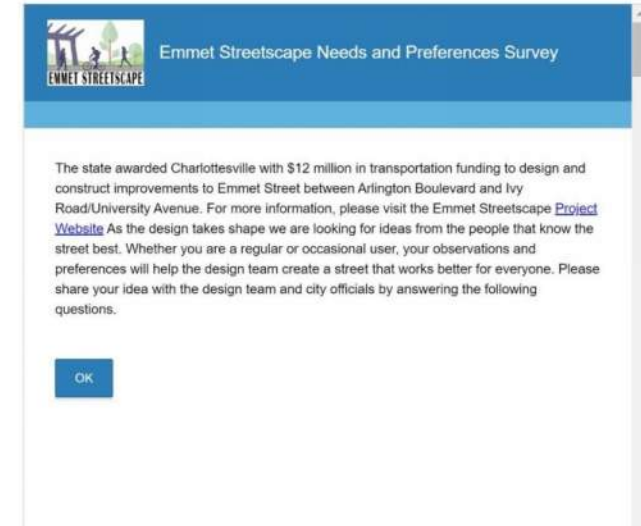
Key Feedback: [Website Survey](#)

- Understanding current use and perceptions
 - **Concerns about traffic, lack of bike/ped accommodations, traffic signal coordination**
- Understanding vision for future use
 - **Accessible and safe crosswalks, coordinated traffic signals, and separate & dedicated spaces for bikes and peds identified as top priorities**
- East or West Tunnel location
 - **60/40 preference for west side**



Please take our survey

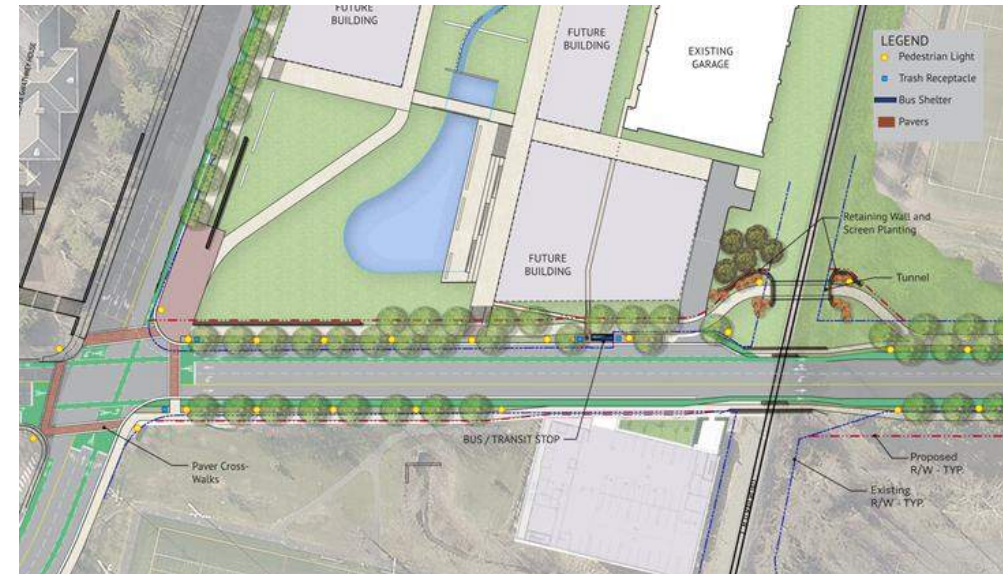
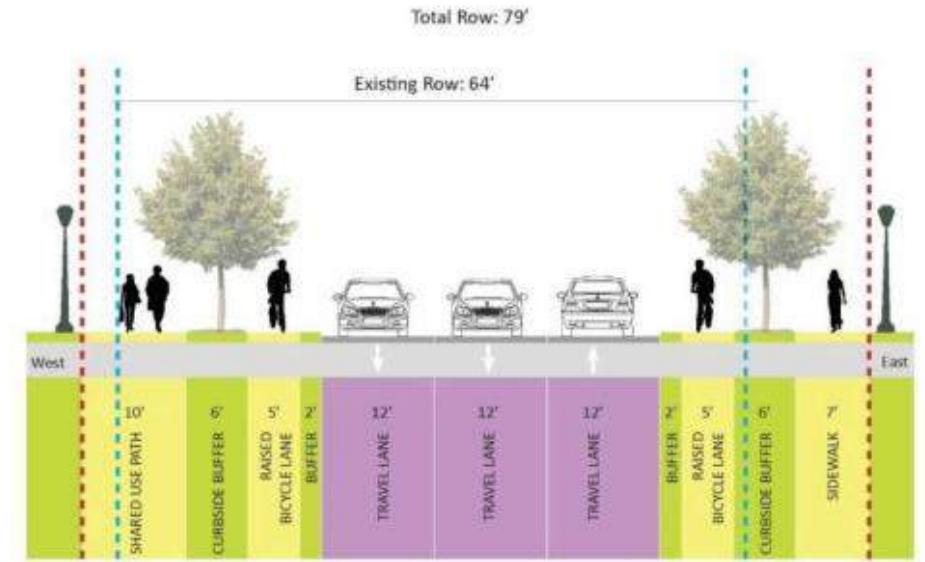
You can complete it here below, or visit [this link](#)



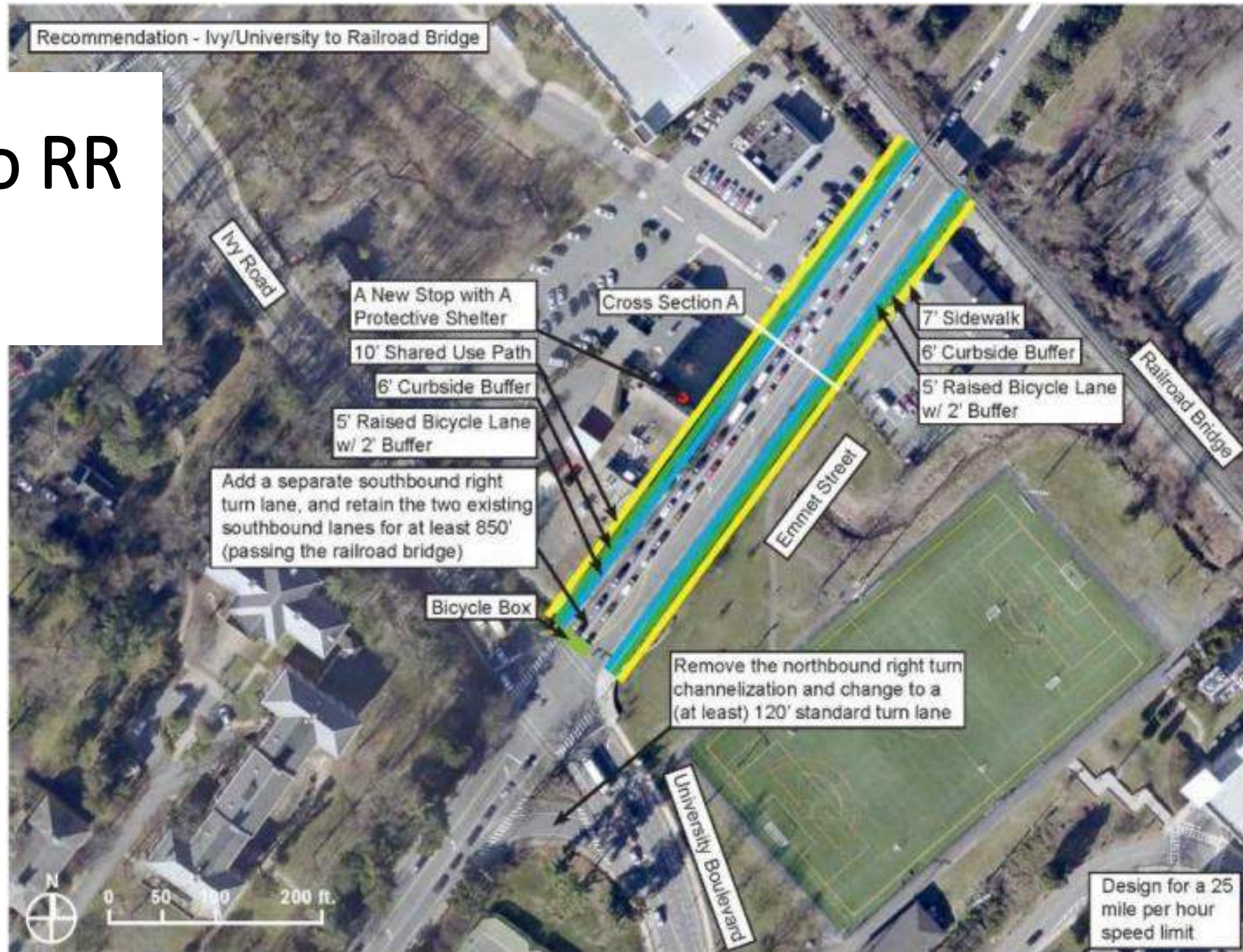
Conceptual Design Review

Study Options

- SUP Path Location
- Bike Lane Configuration
- Mid-block crossing at Goodwin Bridge
- Width configurations
- Transit



Emmet/Ivy to RR Concepts



RR to Massie Concepts



Massie to Arlington Concepts





Concept Options

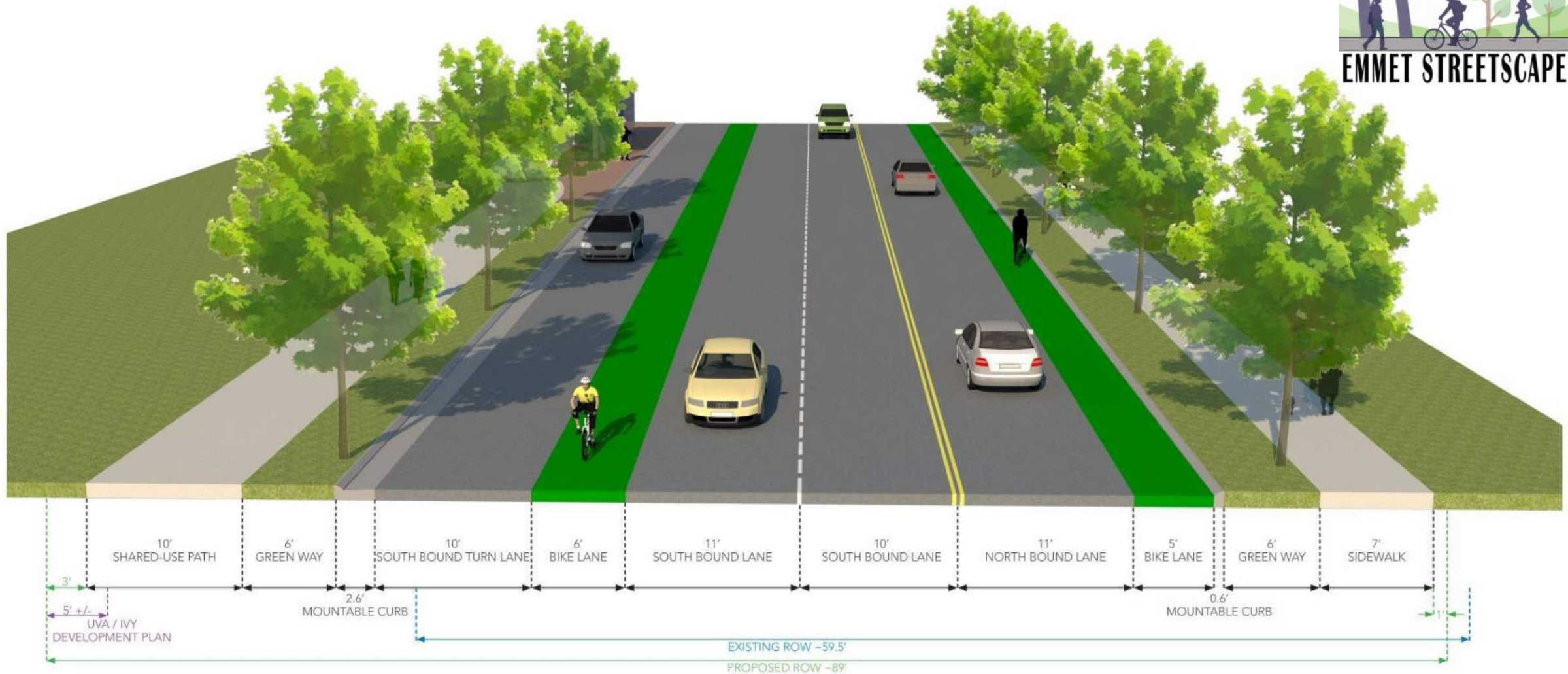
Preferred Concept Options



- Recommendations from the Multimodal Study
- Bike lane
- Shared-Use Path
- Transit
- Traffic operations



Typical Section – Emmet St. at Ivy Rd.



Section A: Emmet Southbound Approach to Ivy Rd. Emmet Streetscape Improvements

Typical Section – Emmet St. RR Underpass



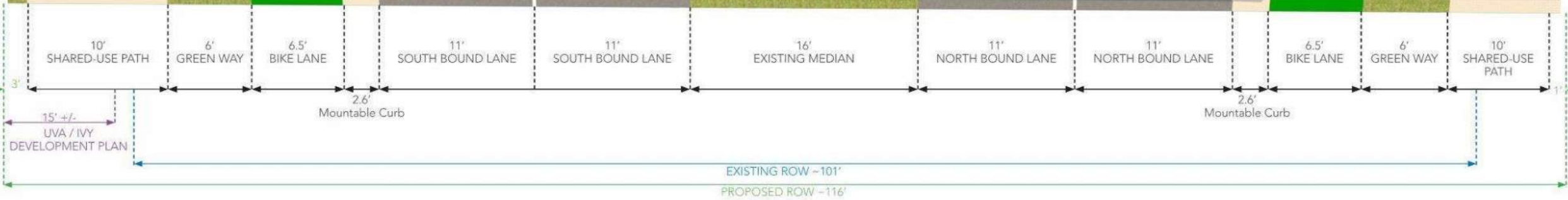
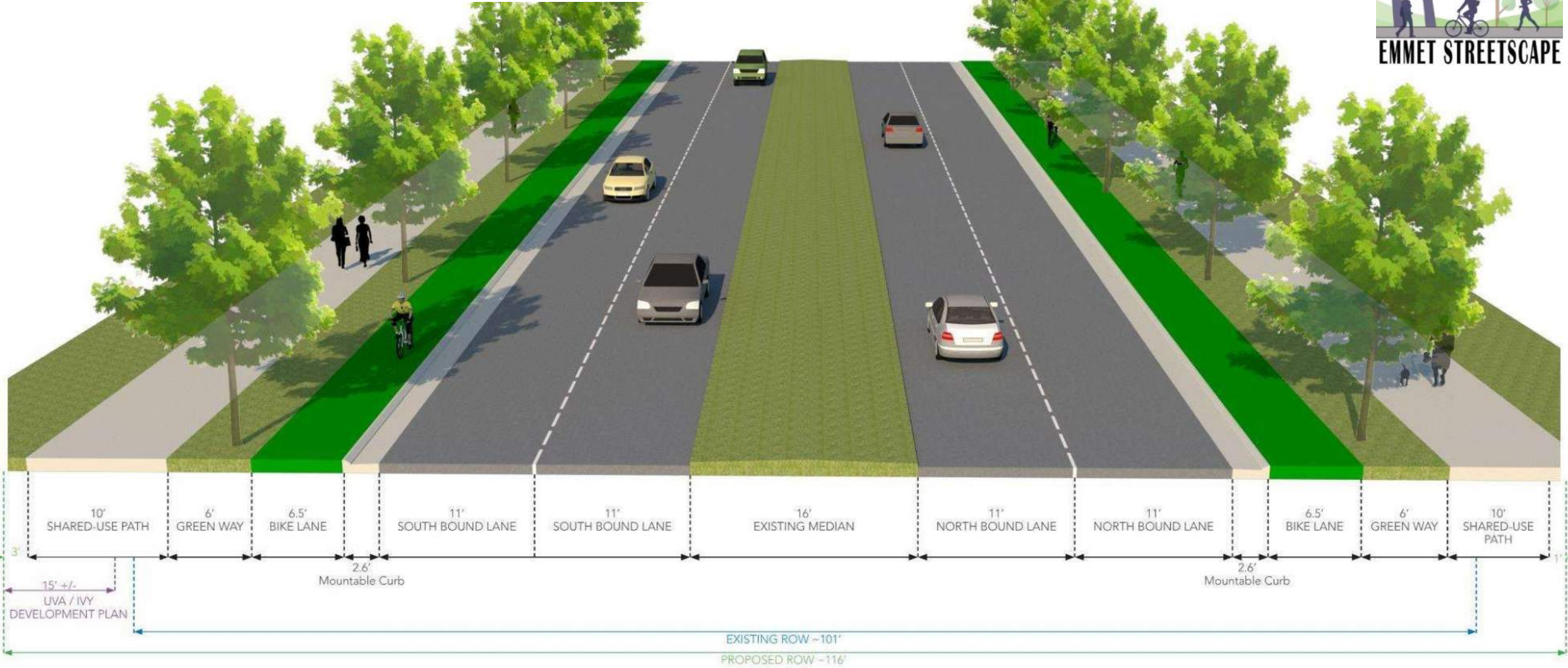
Section B: Railroad Underpass Southbound Emmet Streetscape Improvements

Typical Section – RR Underpass to Massie Rd.



Section C: Railroad Underpass to Massie Rd. Emmet Streetscape Improvements

Typical Section – Massie Rd. to Arlington Blvd.



Section D: Massie Rd. to Arlington Blvd Emmet Streetscape Improvements

Concept Option



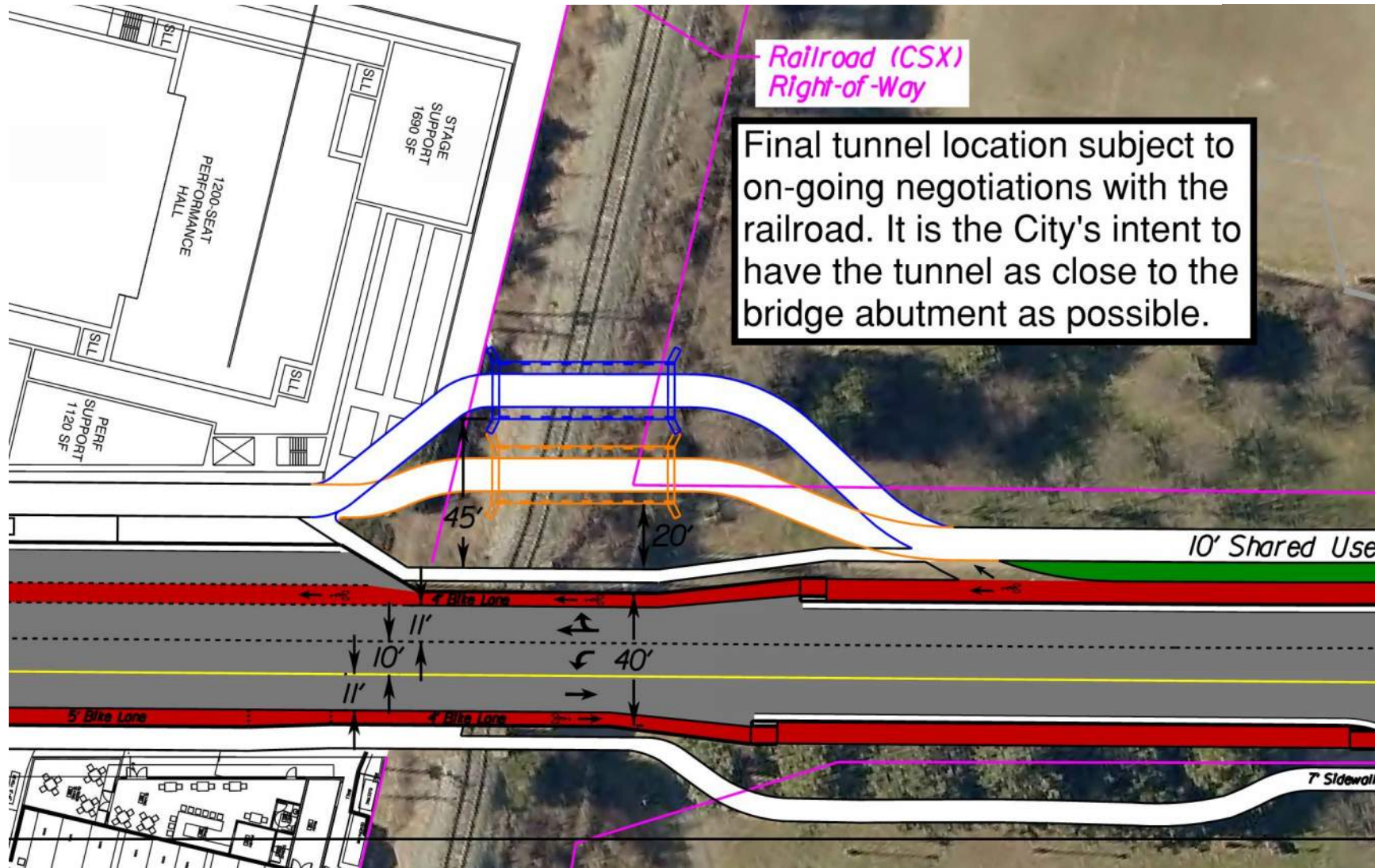
Emmet Streetscape Improvements Proposed Concept



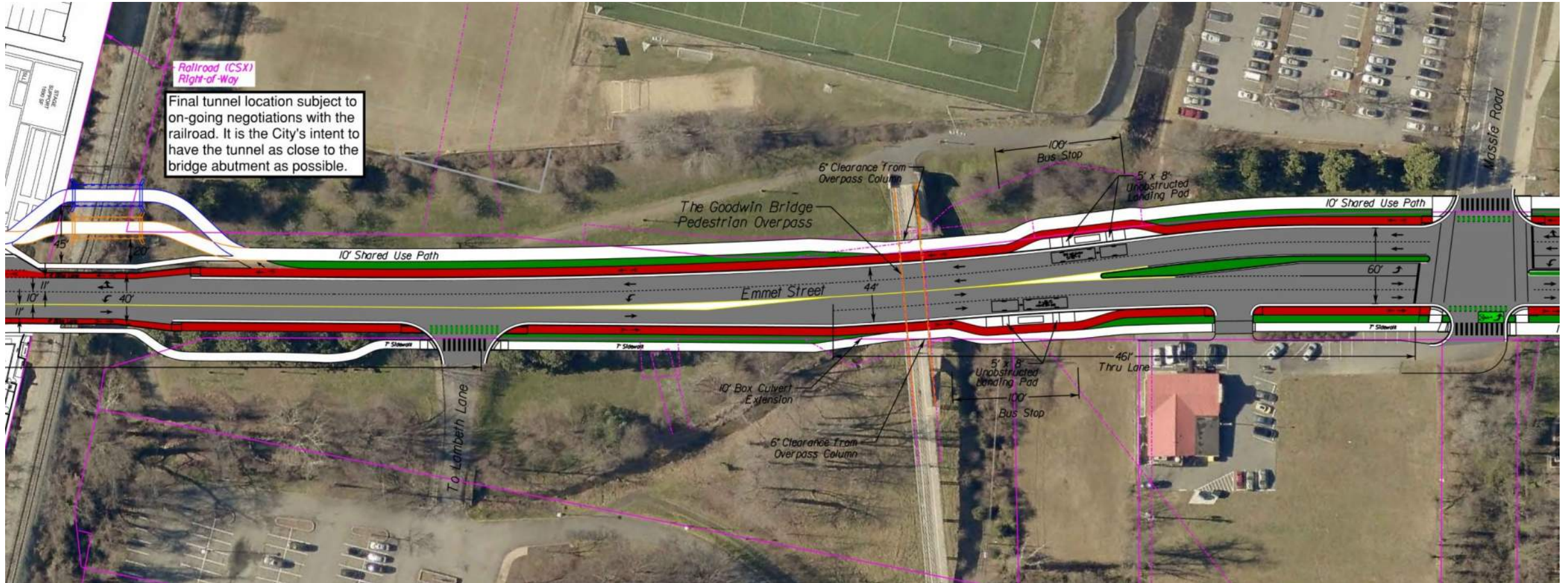
Emmet/Ivy to RR



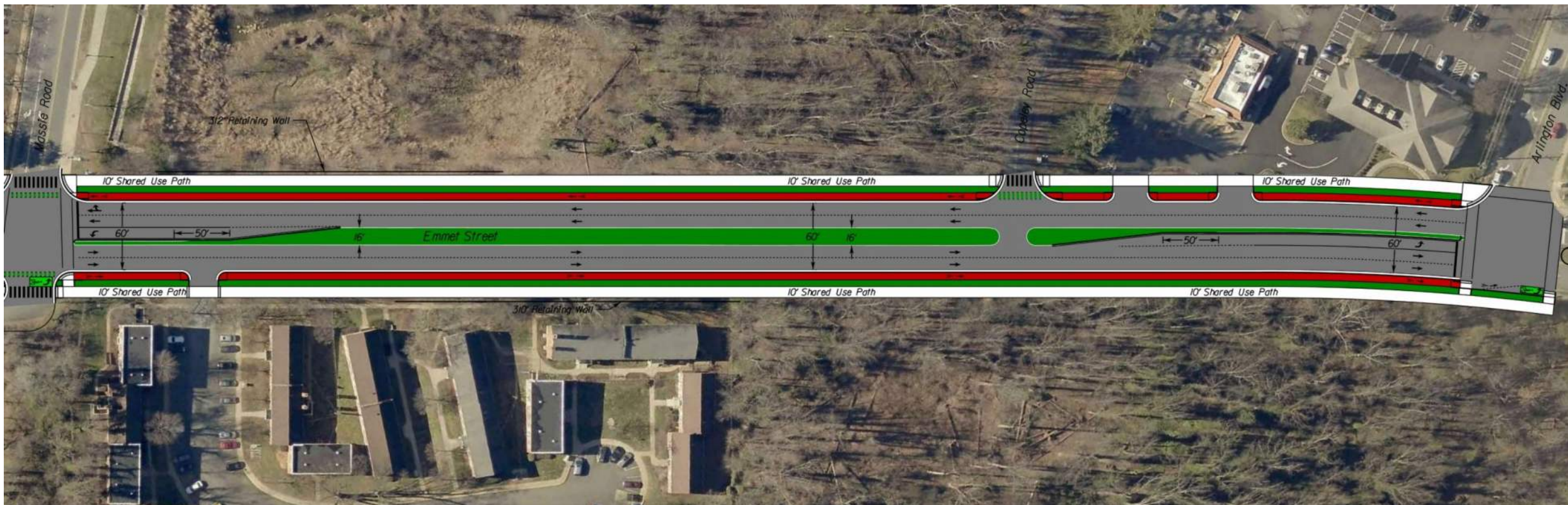
Emmet/Ivy to RR – Inset of Tunnel



RR to Massie



Massie to Arlington





Shared-Use Path Tunnel

Emmet Street RR Bridge

Bridge #: 1834
Type: I-Beam 48'-91/4"
Clearance: 19' – 7" B/R to Ground
Built: 1934
E70 Loading
Ballast Deck

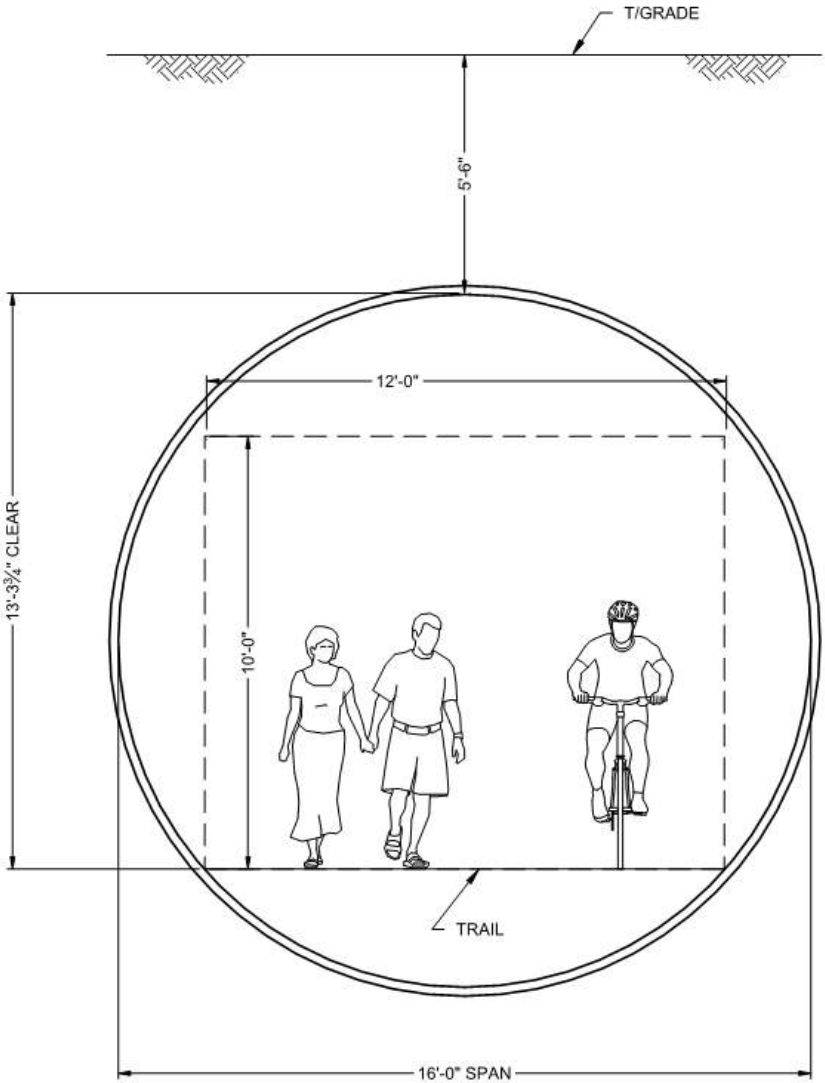


south approach



north approach

Concept Design



16'-0" Diameter Option

Approximate Area: 142 sq. ft. used, 203 sq. ft. total

- NOTES
- MEASUREMENTS ARE TO THE INSIDE CRESTS OF THE CORRUGATION
 - DIMENSIONS ARE SUBJECT TO MANUFACTURING TOLERANCES

Liner Plate Underpass



Review for Comprehensive Plan Consistency

Comprehensive Plan Compliance

- The Bicycle and Pedestrian Master Plan Vision Network identifies a shared use path arterial between Ivy Road and Angus Road.
- Bike lane facilities on Emmet Street are included in the City's Bikeway Facility Recommendations
- Both bike and pedestrian improvements are key components of the approved SmartScale funding.
- Will provide critical north-south arterial link for connecting the bike and trail network in the northwestern area of the City.
- Addresses a critical need for multi-modal improvements at the Ivy Road and Arlington Boulevard intersection



Next Steps

- Citizens Information Meeting
 - May 2019
- Project Scoping
 - June 2019
- Public Hearing
 - November 2019



Thank you!

Questions?

