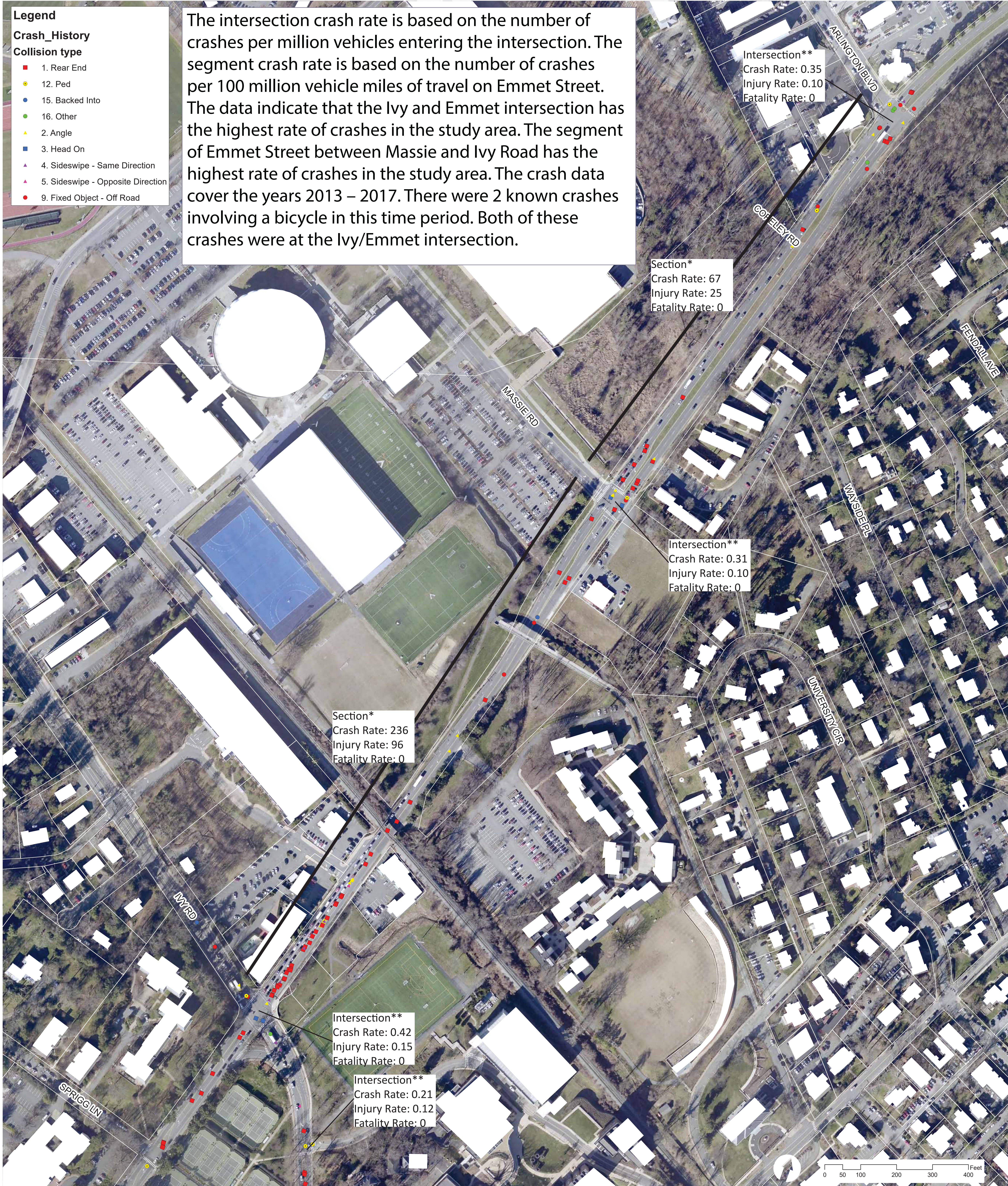


## Crash History and Crash Rates

- Legend**
- Crash\_History**
- Collision type**
- 1. Rear End
  - 12. Ped
  - 15. Backed Into
  - 16. Other
  - 2. Angle
  - 3. Head On
  - 4. Sideswipe - Same Direction
  - 5. Sideswipe - Opposite Direction
  - 9. Fixed Object - Off Road

The intersection crash rate is based on the number of crashes per million vehicles entering the intersection. The segment crash rate is based on the number of crashes per 100 million vehicle miles of travel on Emmet Street. The data indicate that the Ivy and Emmet intersection has the highest rate of crashes in the study area. The segment of Emmet Street between Massie and Ivy Road has the highest rate of crashes in the study area. The crash data cover the years 2013 – 2017. There were 2 known crashes involving a bicycle in this time period. Both of these crashes were at the Ivy/Emmet intersection.



\* Virginia Urban Other Principal Arterials Average Crash Rate: 181; Injury Rate: 105; Fatality Rate: 0.67  
 \*\* No comparable data is available for intersection crash rates