

## Emmet and Arlington



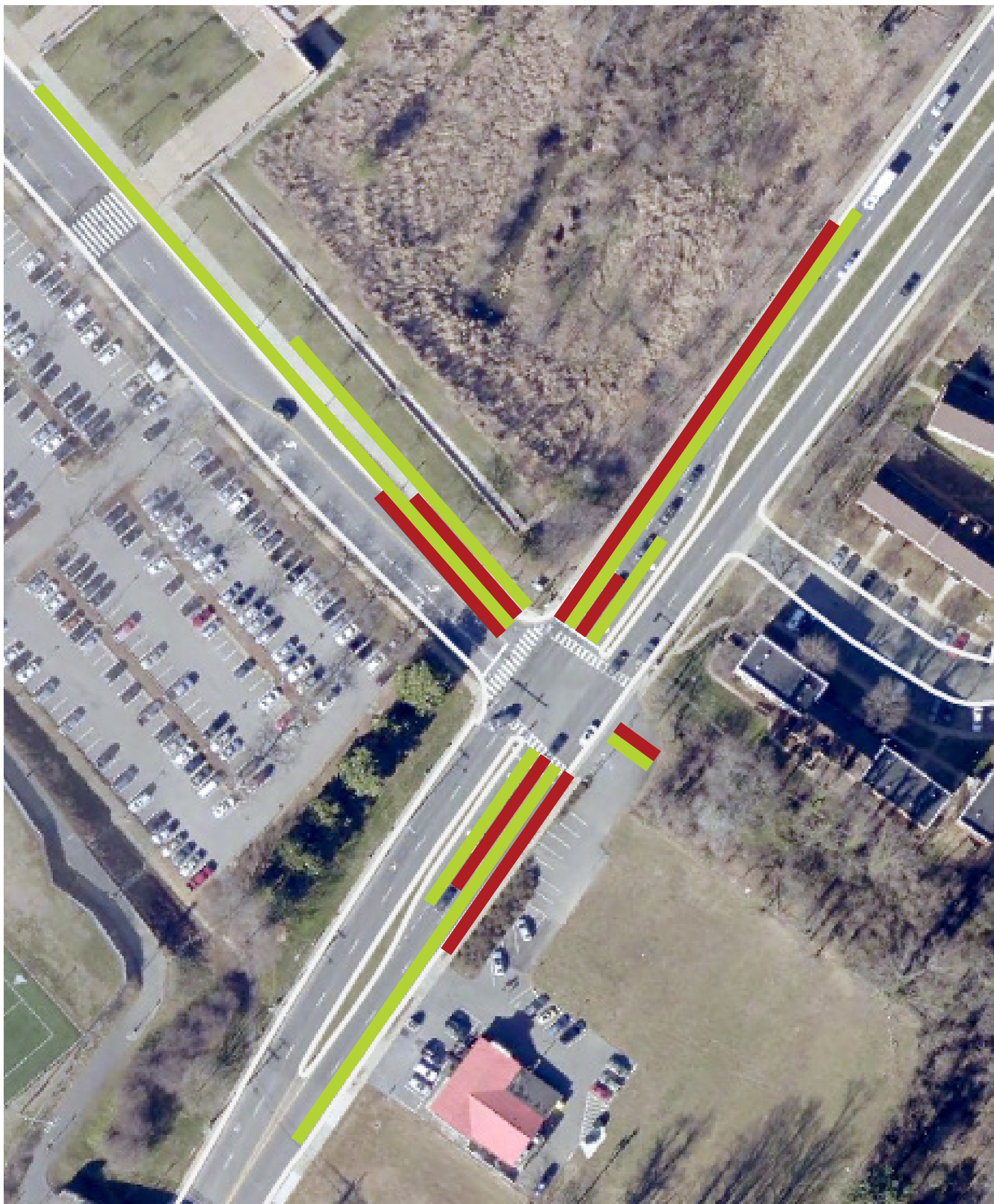
Red = AM queue length in feet  
Green = PM queue length in feet

All diagrams shown at this scale



Approach	Movement	Storage	AM			PM		
			LOS	Delay	Queue	LOS	Delay	Queue
3. Emmet/Arlington								
Arlington	EBL	-	D	50.6	166	D	48.6	263
	EBR	100	D	39.5	169	C	29.8	170
Emmet	NBL	200	D	48.1	188	D	49.9	228
	NBT	-	A	2.1	100	A	4.6	212
Emmet	SBT/SBR	-	B	12	441	B	14.9	327
Intersection			-	B	16.8	B	16.7	

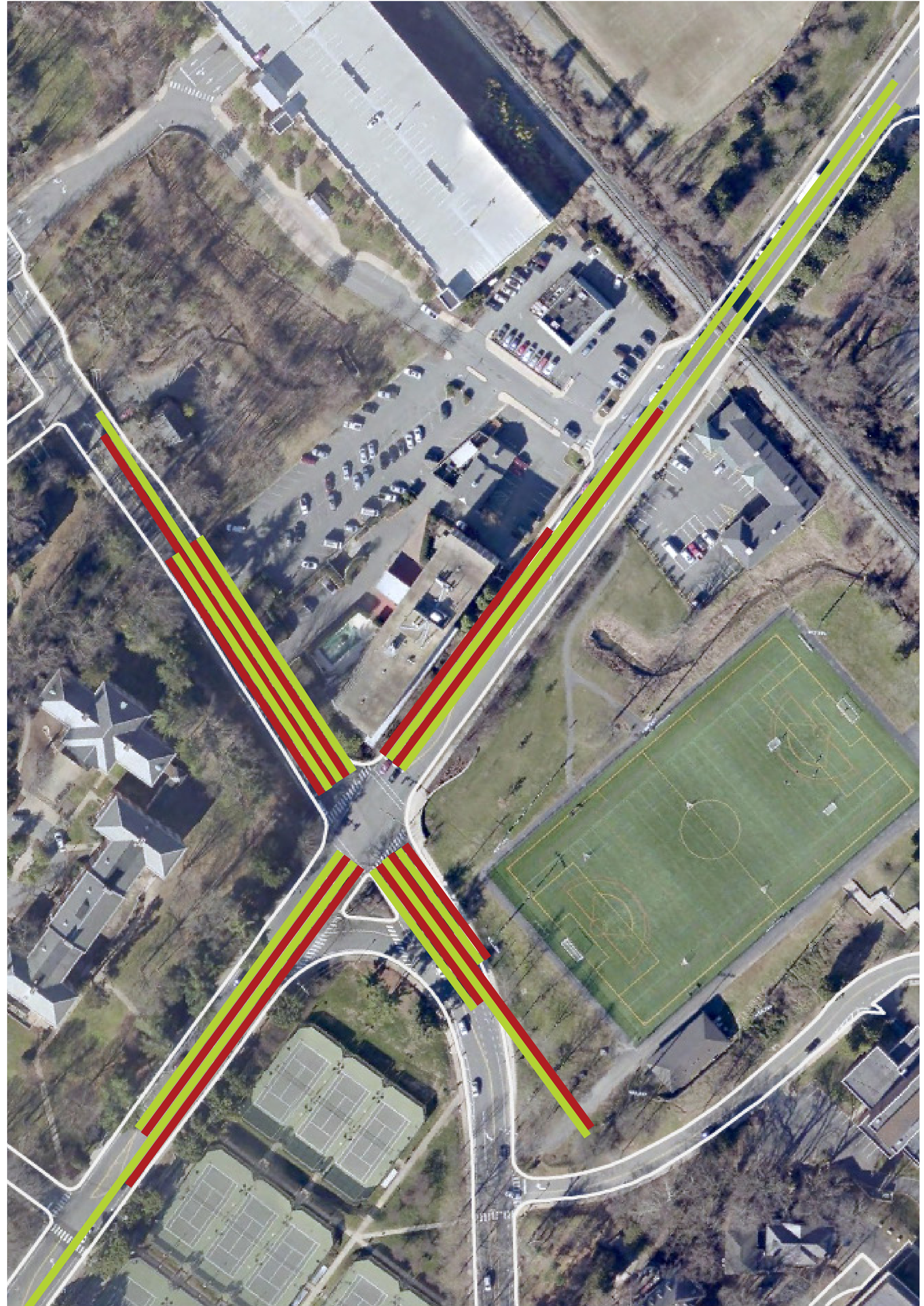
## Emmet and Massie



Approach	Movement	Storage	AM			PM		
			LOS	Delay	Queue	LOS	Delay	Queue
2. Emmet/Massie								
Massie	EBL	200	D	43.8	104	E	67.5	229
	EBT/EBR	-	A	0	123	D	38.4	466
Business	WBL/WBT/WBR	-	A	0	28	A	0	29
	NBL	80	A	8.3	99	A	9.2	124
Emmet	NBT/NBR	230	A	8	140	B	13.6	292
	SBL	90	A	6.5	72	A	9	129
Emmet	SBT/SBR	-	B	13.5	317	B	14.9	349
Intersection			-	B	12.8	C	21.8	

Queuing of PM northbound through/northbound right (951 feet) shown here in actual length, which extended beyond the corridor study's base map.

## Emmet and Ivy



Approach	Movement	Storage	AM			PM		
			LOS	Delay	Queue	LOS	Delay	Queue
1. Emmet/Ivy								
Ivy	EBL	215	E	59.6	280	E	73	279
	EBT	-	E	70.5	417	E	56.8	439
	EBR	215	D	36.8	280	A	0	280
University	WBL	120	E	59.9	170	E	62.3	170
	WBT	-	D	53.7	341	E	62.4	347
	WBR	75	C	32	140	D	36.9	140
Emmet	NBL	325	B	18.8	348	C	26	349
	NBT/NBR	-	C	25.1	394	C	30.1	951
Emmet	SBL	-	B	16.4	280	C	20.2	854
	SBT/SBR	-	C	26	442	D	38.5	843
Intersection			-	D	36.6	D	41.5	